

INSTALLATION INSTRUCTIONS



Auto Reversible Safety Device (ARSD) / Auto Reversible Ventilation Safety Device (ARVSD)

METRIC



Recommended tightening torque for the Metric thread: $4 \text{ N.m} \pm 1 \text{ N.m}$
Product Thread Type: M50x1.5
Recommended hole diameter for non-threaded holes: 50.0-50.3 mm

SNAP FIT



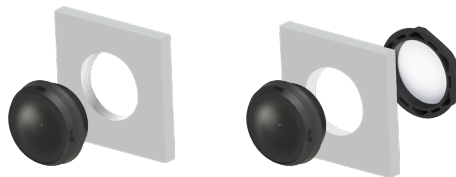
Enclosure wall thickness suitable for mounting : $2.0 \text{ mm} \pm 0.1 \text{ mm}$
Recommended hole diameter: 50.0-50.2 mm

INSTALLATION INSTRUCTIONS

Auto Reversible Safety Device (ARSD) / Auto Reversible Ventilation Safety Device (ARVSD)

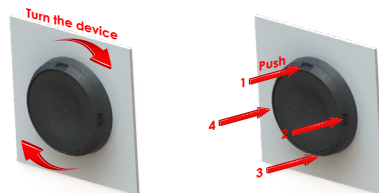
Metric & Snap Fit

METRIC



- Mount the ARSD/ARVSD to the appropriate opening on the enclosure.
- Tighten the device with 4N.m torque. Use locknut to tighten if the enclosure is non threaded.

SNAP FIT



- For the snap fit locking, when seal contact to enclosure, turn the device quarter to half tour to ensure outer seal edges fully open and it doesn't fold in.
- Press the cut-outs one by one at the alignment of each numbered snap and ensure all the snaps are mounted.
- Device should be turn again (quarter to half tour) to ensure its fully mounted. If the snap/snaps not mounted, device will come off while turning.